

BP16340 Rechargeable C Battery

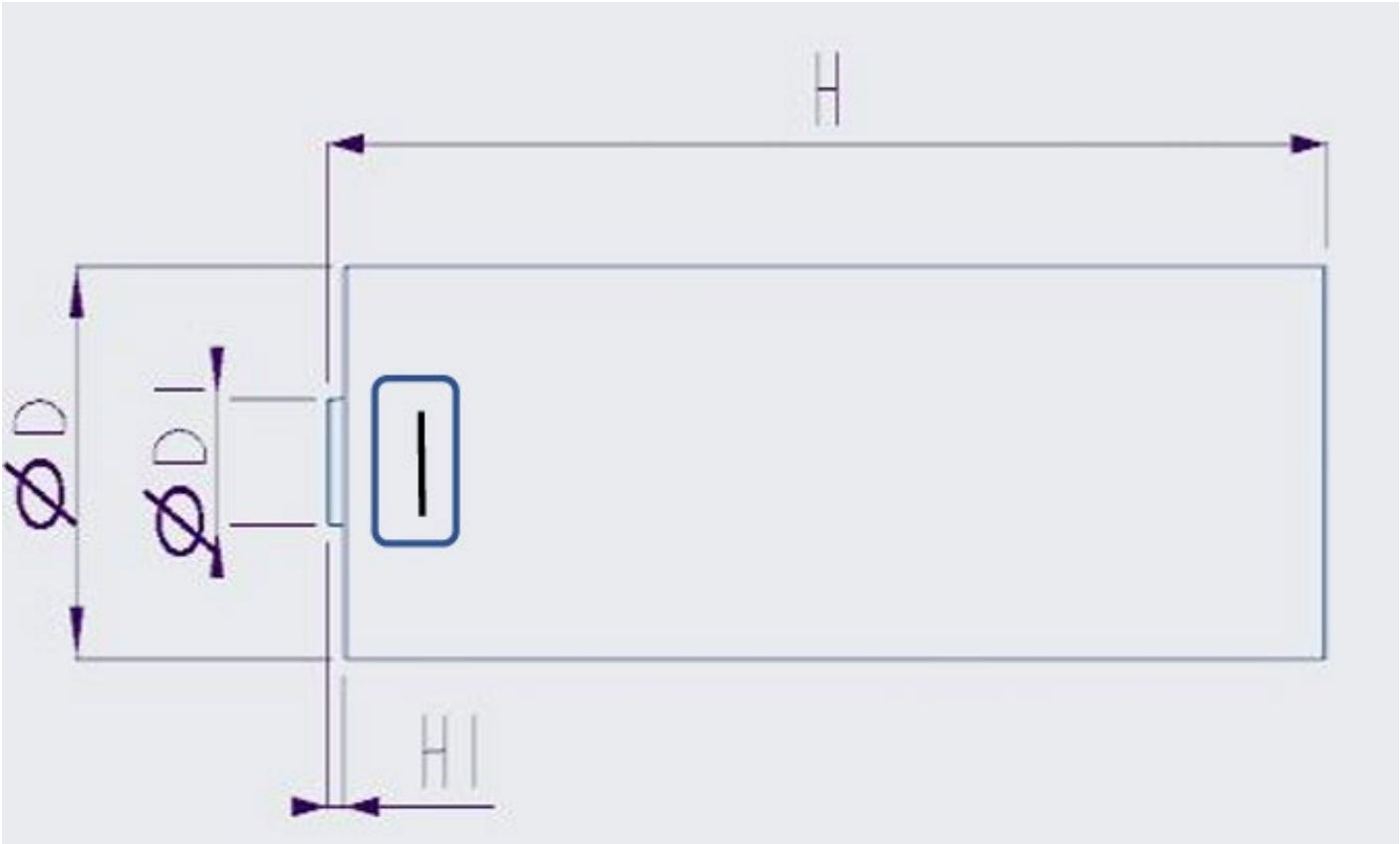
Specifications	
Model	BP16340
Nominal voltage	3.7V
Nominal capacity	850mAh
Minimum Capacity	750mAh
Combination	One-piece design
Additional Feature	Type-C charge
Storage Temperature	(1 month) -20°C~50°C
Max. Continuous Discharge Current	4A
Internal Resistance	$\leq 80\text{m}\Omega$
Weight	20g
Shipment Voltage	$>3.5\text{V}$
Operating environment	Charging temperature: 0°C~45°C Discharge temperature: -20°C~60°

Features and Benefits

1. Compact 16340 Size: Standard cylindrical form factor (16.8mm x 33.55mm) with a 3.6V, 850mAh capacity.
2. 4A Discharge Current: Supports continuous discharge up to 4A for various applications.
3. Integrated Type-C Charging: Features a built-in Type-C port for convenient USB charging (5V, ~420mA).
4. Self-Recovery Protection (PCM): Includes auto-reset safeguards for overcharge, over-discharge, overcurrent (4.2-7A), and short circuits.
5. Low Internal Impedance: $\leq 80\text{m}\Omega$ ensures efficient power delivery and stable performance.



Dimensional



H: 33.55mm
D: 16.8mm
H1: 0.8mm
D1: 6mm